



**St Clement's Church
Toronto**

2024 Impact Report

Dear Friends in Christ,

We are grateful for another year of **living out our mission of learning to follow Jesus Christ.**

Our pillars of ministry are:

The Worship Experience:
Building worship for everyone.

Engagement through
Christian Education:
Growing and learning in faith.

Deepening Relationships with
One Another:
Building a multi-generational Christ-centred community for life.

Reaching Out:
Showing God's love in the neighbourhood and beyond.

These four pillars are supported by Sustainable Operations, which makes transformation possible. In all that we do, **we are devoted to a common life**

shaped by the Fruits of the Spirit: love, joy, peace, patience, kindness, generosity, faithfulness, gentleness, and self-control.

We're pleased to share the growth and impact thus far in 2023-2024.

In the following pages, you'll see how and where your gifts and meaningful engagement have made an impact across our community. As we make our way through 2024 we are committed to our break-even budget, which includes a **\$60,000 increase in our missional plan.** Please consider your generous response and continue engaging through the gifts of your time, treasure, and skills.

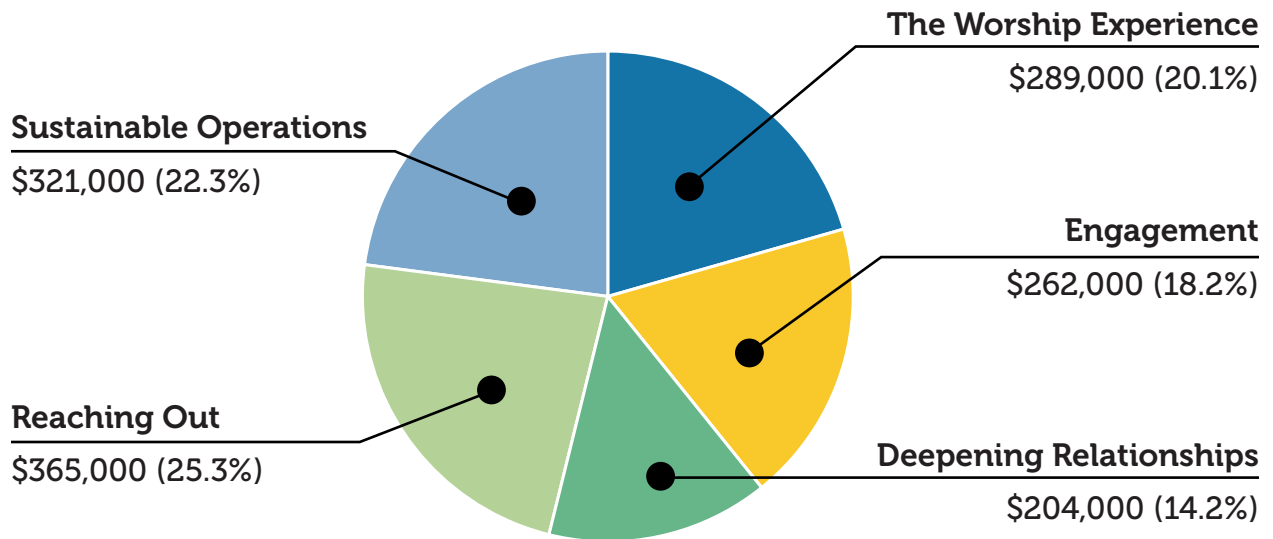
We are incredibly grateful to find ourselves on the receiving end of God's grace, mercy, and provision.

Yours truly in Christ,

Andrew Federle
Pamela Rayment
Liska Stefko

Investment in our work

Approximate numbers



The Worship Experience

"They gave themselves first of all to the Lord, and then by the will of God also to us."

(2 Corinthians 2:5)

Impact:

On average 400 people participate weekly

Over 180 amazing volunteers participate in bringing this worship to life

We welcomed 2,400+ people in person and online during Holy Week and Easter services

We welcomed 2,100+ during the Christmas season

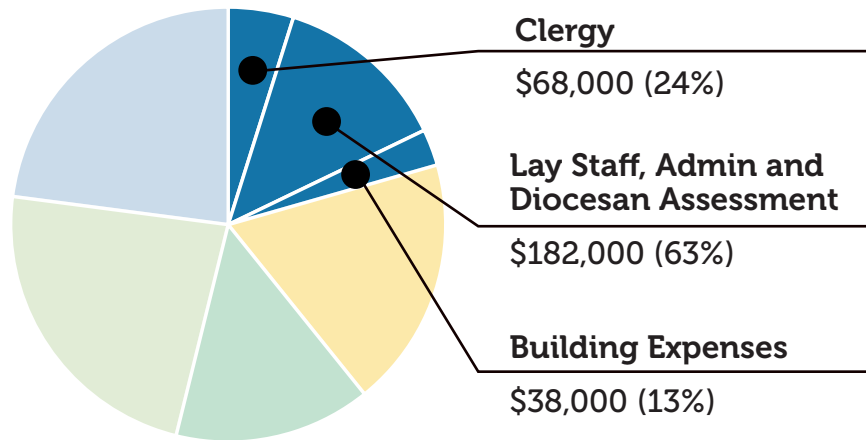
Every week 25 children and teens explore and grow in their faith

Made possible thanks to the A/V Team, Chancel Guild, Communion Ministers, Nursery Ministry, Children's Ministry, Youth Ministry, Honorary Assistant, Musicians, Choir, Readers & Intercessors, Sacristans, and Welcome Ministry (including Sidesteam & greeters) volunteers.



Investment in the Worship Experience

Approximate numbers



At the core of St. Clement's mission is a vibrant worship experience that invites participation, fosters spiritual growth, and builds community.

The recent appointment of Dr. Michael Buttrey, our first Digital Pastor, supports our evolving worship experience to meet the needs of our diverse and growing community. In the first year of this pioneering role, Michael will explore ways of connecting and expanding our digital presence, making our worship services even more accessible to those who participate virtually, strengthening our community ties.

Early research indicates that a large percentage of those who worship with us online are seniors, more than 50% of whom also connect with St. Clement's in-person once a month. Building on these findings, we look forward to continuing to integrate the body of Christ at St. Clement's in all its fullness: in-person and online, for youth and seniors.

Given the growth that we've experienced at St. Clement's, this Lent we began an intentional initiative called *The Baptismal Journey* where adults interested in deepening their faith and exploring baptism gathered for a shared meal, learning and sharing. During this time we also journeyed with senior youth interested in exploring baptism. Out of this initiative, two adults and one youth were baptized at our Service of the Easter Light on the Saturday of Holy Week. This is an initiative that we hope to expand in coming years.

To all at St. Clement's, thank you for all you have done to help me along my way, especially in my discernment of my vocational call to the Priesthood. Your prayers and encouragement have made the world of difference in my life. I have seen and felt Christ among the place and people of St. Clement's every step of the way.

*Mackenzie Wolf,
Former Pastoral Associate
for Youth & Children*



Engagement through Christian Education

We are committed to growing and learning in faith through accessible and rich opportunities focused on discovering Jesus in everyday life. Investing in Christian Education initiatives, like OMG Tuesdays and Small groups, fosters an environment where people can explore and deepen their understanding of faith, and experience belonging.

Impact:

100+ people are growing in their faith at OMG Tuesdays

40 people participate in our Small Group Ministry

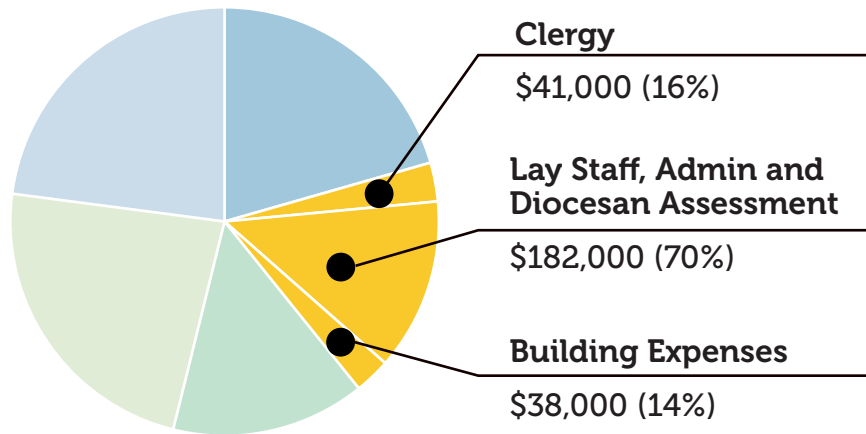
Small Group Ministry: 4 online groups, 1 group in person

We engage 38 Volunteers supporting Christian Education

Made possible thanks to the OMG Tuesday and Small Groups volunteers.

Investment in Engagement through Christian Education

Approximate numbers



Through Christian Education, we are not just teaching faith—we are living it. Together we are creating a community where everyone is welcomed to grow, learn, and belong.

Small Groups and OMG Tuesdays take place in our church building, people's homes, and in the digital sphere, ensuring inclusion and access for anyone who wants to learn to follow Jesus Christ.

As we reflect on the impact of small groups in our lives, Katherine and I want to express deep gratitude to the St. Clement's community. Your commitment to fostering a culture of connection, spiritual growth, and support has made Small Groups possible for so many individuals and families. We are immensely grateful for the role each of you plays in sustaining this vital aspect of our community.

Paul Hicks

Co-Chair, Christian Education

Small Groups gather weekly. Trained leaders facilitate discussions on the text for the following Sunday's sermon, participants share their thoughts, pray together, and care for one another. OMG Tuesdays are multi-week study series held 3 times a year. In the afternoon session, people gather online. In the evening, participants gather for a light meal, followed by teaching and discussion.

As we look to the future, St. Clement's Church is committed to sustaining and enriching our Christian Education offerings. Our vision is to continue to serve, adapting to meet the needs of our diverse community. We are grateful for the support, dedication, and generosity of our volunteers, staff, and congregation. Your contributions make this kind of community support and care possible.



Deepening Relationships with One Another

We are building a diverse, intergenerational, Christ-centred community that cares for and supports one another throughout life's journey.

Impact:

10+ volunteers on our Pastoral Care Team

50+ people served through Pastoral Care

200+ people regularly join us for Sunday Coffee Time

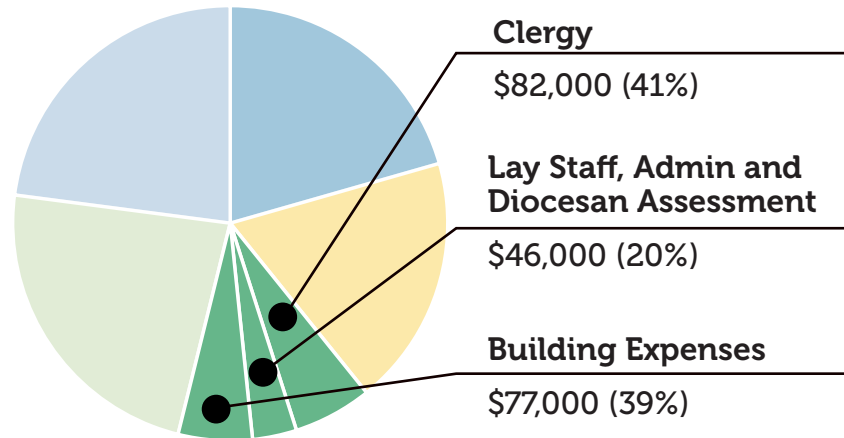
12 people attended a new series called "Start the Conversation"

39 joined us and volunteered in "Getting Connected"

Made possible thanks to the 9:30am & 11:00am Sunday Coffee Time, Hospitality Team, Getting Connected, Office Volunteers, Pastoral Care Team, Start the Conversation, and Women of Faith volunteers.

Investment in Deepening Relationships with One Another

Approximate numbers



Our approach to deepening relationships within our church community includes welcoming pathways for newcomers and returning members through Getting Connected. This informal, evening gathering explores opportunities for people to deepen their connection with our community. Volunteers and Clergy facilitate this time together and share their experiences of St. Clement's.

Fellowship is an important part of the continued growth of the church and helps us remember that we get to live faith in community. Sunday Coffee Time, hosted after both Sunday services, offers a space for conversation and connection, where stories are shared, friendships are formed, and a sense of belonging is cultivated.

Through the dedication of volunteers and clergy, our Pastoral Care Team reaches beyond the church walls, offering support to individuals and families in their homes, hospitals, and long-term care facilities. This ministry of presence speaks to our commitment

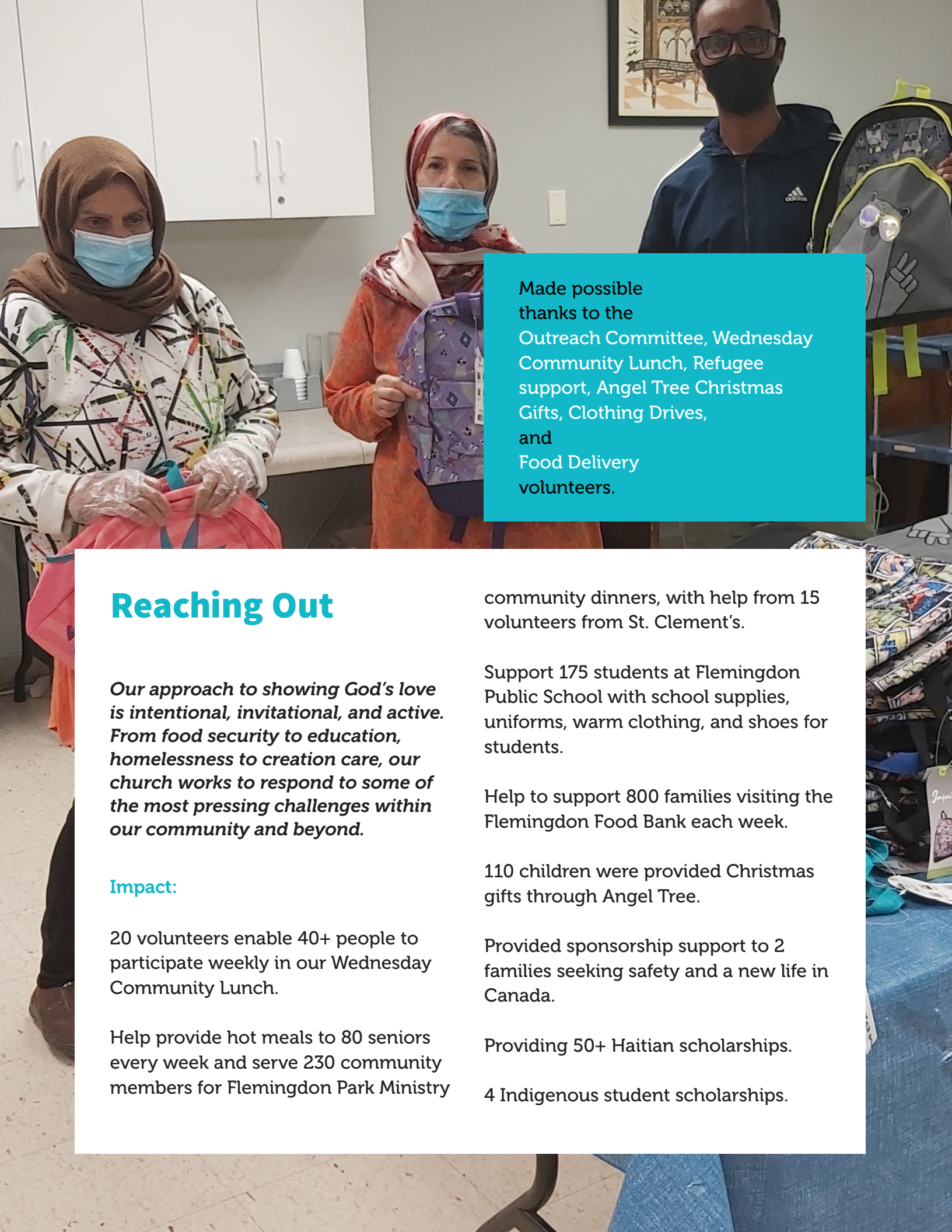
to walking alongside one other through every season of life.

A new series called Start the Conversation addresses the need for meaningful dialogue around end-of-life planning, a topic often shrouded in uncertainty and hesitation. By engaging in discussions about advanced care planning and Christian funeral coordination, we're breaking down barriers, offering guidance in navigating these essential conversations.

The work of relationship building takes many forms and we give thanks for our volunteers, staff, and clergy, who serve as the hands and feet of Christ, working to nurture authentic relationships in times of joy and grief.

"The one who gathered much did not have too much, and the one who gathered little did not have too little."

(2 Corinthians 8:15)



Made possible thanks to the Outreach Committee, Wednesday Community Lunch, Refugee support, Angel Tree Christmas Gifts, Clothing Drives, and Food Delivery volunteers.

Reaching Out

Our approach to showing God's love is intentional, invitational, and active. From food security to education, homelessness to creation care, our church works to respond to some of the most pressing challenges within our community and beyond.

Impact:

20 volunteers enable 40+ people to participate weekly in our Wednesday Community Lunch.

Help provide hot meals to 80 seniors every week and serve 230 community members for Flemingdon Park Ministry

community dinners, with help from 15 volunteers from St. Clement's.

Support 175 students at Flemingdon Public School with school supplies, uniforms, warm clothing, and shoes for students.

Help to support 800 families visiting the Flemingdon Food Bank each week.

110 children were provided Christmas gifts through Angel Tree.

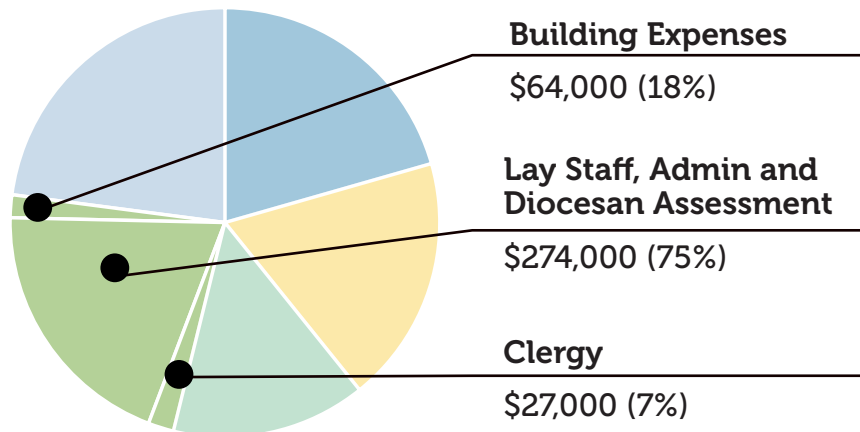
Provided sponsorship support to 2 families seeking safety and a new life in Canada.

Providing 50+ Haitian scholarships.

4 Indigenous student scholarships.

Investment in Reaching Out

Approximate numbers



Reaching Out continues to be a significant aspect of living out our faith in Christ.

Locally, we're dedicated to alleviating the immediate needs within our neighbourhood and city: engagement with the Flemingdon Park food bank, support for community dinners, and donations of essential items like school supplies and clothing. During the Christmas season, outreach extends to sharing joy and generosity with children, partnering with Prison Fellowship to

provide gifts to the children and families of those who are incarcerated.

Globally, St. Clement's provides sponsorship and housing support, in collaboration with local agencies, to address the needs of refugees and newcomers.

Through the dedicated support of parishioners, volunteers, and staff, St. Clement's Church is spreading the good news of Jesus Christ, while meeting very real physical, spiritual, and social needs.

Sustainable Operations

Sustainable Operations supports and makes possible the work we do in all of our pillars of ministry. As we continue to grow at St. Clement's, we know the importance of stewarding the resources that have been entrusted to the church. In the sphere of sustainable operations, we also have the privilege of building meaningful partnerships and caring for our church building.

How We're Building Sustainability into Our Operations

11 community partners

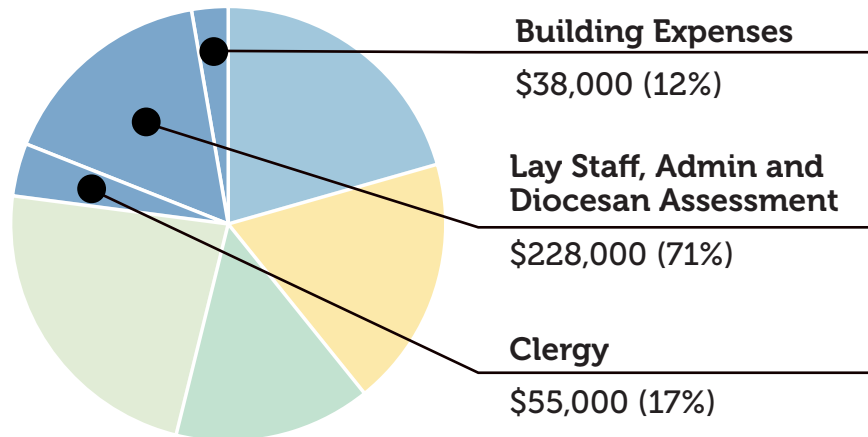
43 volunteers (Wardens, Parish Council, Property, Stewardship and Care of Creation)

Made possible thanks to the Archives, Creation Care, Lay Delegates to Synod, Parish Council/Strategic Property Committee, Stewardship Committee, Giving for Growth Financial Campaign Team, and Warden volunteers.

ANGLICAN CHURCH OF ST. CLEMENT
WORSHIP WITH US
IN PERSON OR
ONLINE  www.stclement.ca
THIS SUNDAY
9:30 AM
8:11 AM

Investment in Sustainable Operations

Approximate numbers



Central to St. Clement's sustainable operations is the cultivation of healthy, reciprocal relationships with our tenants and community partners. We're grateful for our 70+ year partnership with the St. Clement's Early Learning School, and our 100+ year relationship with St. Clement's School. These partnerships are mutually enriching and foster a shared sense of purpose and community.

Our commitment to Creation Care is an endeavour that goes beyond the mere reduction of our carbon footprint; it's about aligning our daily operations with the values of Christian stewardship and respect for God's creation. Through initiatives aimed at reducing energy consumption and promoting sustainability, we are not only making

a statement about our care for the earth but also setting a precedent for responsible environmental stewardship.

Our Wardens and Stewardship Teams lead our church into the future by ensuring we have the human and financial resources necessary to fulfill our vision. Meanwhile, the Property Committee and Facilities Team oversee the maintenance and safety of our building, inside and out, ensuring we have a well cared for space for worship and community gathering.

We're grateful to St. Clement's parishioners, clergy, staff, and volunteers whose dedication and expertise strengthen our foundation and map our path toward a sustainable future.

God is faithful.

Through our pillars of ministry we have nurtured the spiritual growth of our congregation and extended our hand in service to meet the needs of those around us. This is what learning to follow Jesus looks like.

As we move forward, we are humbled by the goodness of God, inspired by what we have achieved together, and motivated by the challenges and opportunities that lie ahead. We invite you to deepen your involvement in the life and mission of St. Clement's Church. Whether through volunteering your time, sharing your talents, or contributing financially, your participation is crucial to our continued growth and impact.

Thank you for being on this journey, together.

Learning to follow Jesus Christ at St Clement's Church, Toronto

Gift Discernment

God has blessed each of us with gifts to serve God's world. Together, we are learning to follow Jesus Christ by sharing these gifts with one another. Let us know what you're excited about and where you see yourself being involved. Contributions of your time and skills to our ministries are as important as your financial giving. Check any boxes that interest you. Our team will follow up with you to continue the conversation.

Name: _____ Phone #: (_____) _____ - _____

Email: _____

Your gifts or skills: _____

During the week

Deepening Relationships

- Pastoral Care Team
- Hospitality Team
- Getting Connected* Team
- Start the Conversation* Team

Reaching Out

- Outreach Committee
- Wednesday Community Lunch
- Refugee support
- Angel Tree Christmas Gifts
- Clothing Drives
- Food Delivery

Christian Education

- OMG Tuesdays support
- Small Groups
- Women of Faith
- Parent / Family Ministry

Sustainable Operations

- Communications
- Property Committee
- Health & Safety Committee
- Creation Care
- Office volunteer
- Stewardship Committee
- _____

On Sundays

Worship Experience

- Sunday Coffee Time
- Chancel Guild/Church decorating
- Communion Ministers
- Lay Readers
- Prayers
- Sacristans
- Nursery/Children's/Youth Ministry
- Musician and/or Choir Member
- Greeters/Sidesteam
- A/V Team
- _____

Do you have ideas for missions or ministries that you would like us to consider and that you would help implement?



Learning to follow Jesus Christ

at St Clement's Church, Toronto

Our Gifts – God's Mission

"I am the vine; you are the branches. If you remain in me and I in you, you will bear much fruit; apart from me, you can do nothing." John 15:5 (NIV)

Name(s): _____

Phone #: (____) _____ - _____

Address: _____

Email _____

We intend to contribute: \$ _____

for the year 2024 toward God's mission here at St Clement's.

Start date of my gift _____ (month)/ _____ (year)

My/Our gift will be paid:

- Weekly \$_____ per week
- Monthly \$_____ per month
- One-time \$_____
- Other _____ (please specify)

I/We plan to use the following gift option:

- Increase Pre-authorized Giving
- Pre-authorized Giving (form on the back)
- Weekly Envelopes (cash or cheque)
- Publicly Traded Securities
- E-transfer to: finance@stclementsto.ca
- Online at CanadaHelps.org
- Credit Card

Credit Card Details:

- VISA Mastercard

Card# _____ Expiry Date: ____/____

Name on Card: _____

Signature: _____

CSV# _____ Telephone#: _____

- I would like information on leaving a legacy gift to St Clement's in my will.

All information will be treated confidentially. Thank you!

Pre-Authorized Remittance Form

Pre-Authorized Giving Change for Existing Donors

I/We authorize an increase of \$_____ per month to be added to my existing monthly donation.

Signature(s) _____

Date_____

Pre-Authorized Giving for New Donors

I/We authorize St. Clement's Church, Toronto to process a debit in the amount of: \$ _____ from my/our account on or about the 20th of each month.

Please begin processing this request on the 20th day of _____(month) ____ (day), 20 _____.

I may revoke my authorization at any time, subject to providing notice of 15 days.

- I/We acknowledge that I/we have read and understood all of the provisions contained in the Terms and Conditions for Pre-Authorized Giving at stclementsto.ca/donate
- I/We authorize the pre-authorized withdrawal from your bank account and attach a DDF or "Void"cheque. (Two signatures are required for joint accounts.)

Donor Signature: _____

Date: DD / MM / YY

Donor Signature:_____

Date:DD/ MM / YY

Additional details (if needed)

Thank you for your generosity in supporting St. Clement's!

P.S. Have you considered a legacy gift to St. Clement's Church? A gift in your Will can shape future generations' faith and help sustain our vital ministry.

- I/We would like to make a gift in my/our Will.
- I/We wish to increase the gift amount in my/our Will.
- I/We would like more information about leaving a planned gift.

We will contact you!



 **S^t Clement's Church**
Toronto